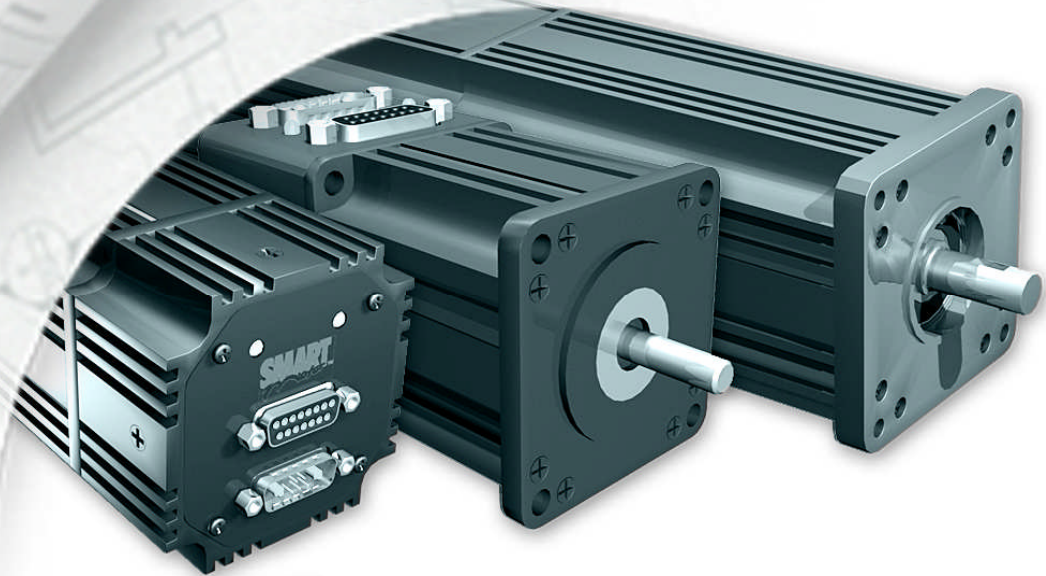


ANIMATICS®



*Defining the Future in Motion Control*

# Welcome

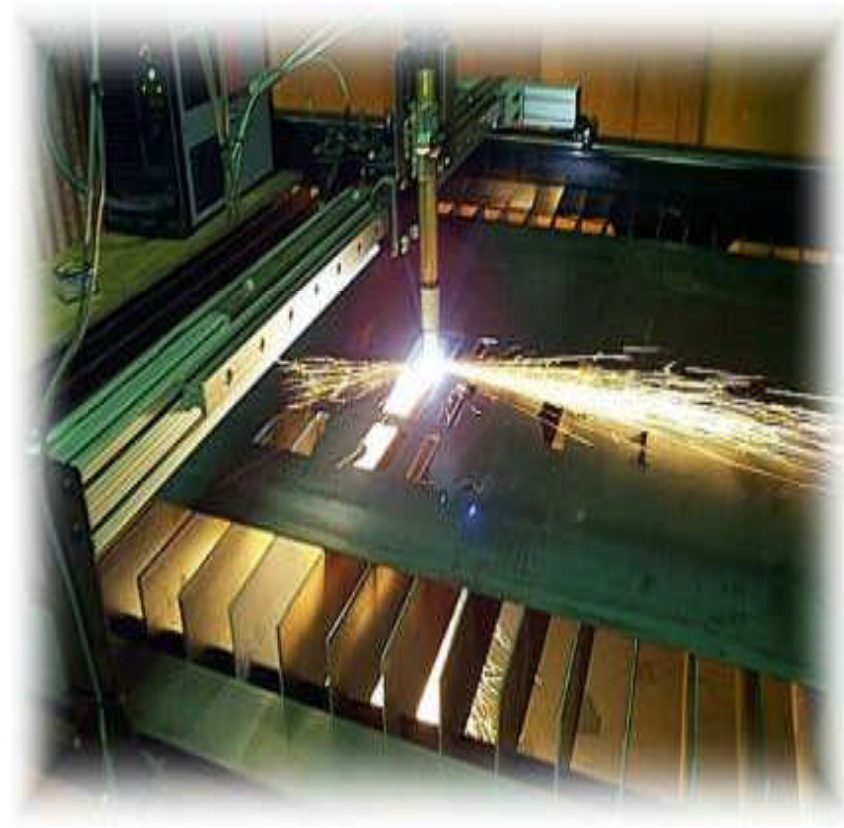


ANIMATICS®

*Defining the Future in Motion Control*

# Applications

- CNC Equipment
  - Plasma/Oxy-fuel cutter
    - 3 axis
    - PC Control
    - Replaced traditional servos



# Applications

- CNC
  - Automated quilting
    - 2/3 axis
    - Replaced traditional servo
    - PC control



# Applications

- Welding
  - Metal Painting
    - 5 axis
    - PLC base control



# Applications

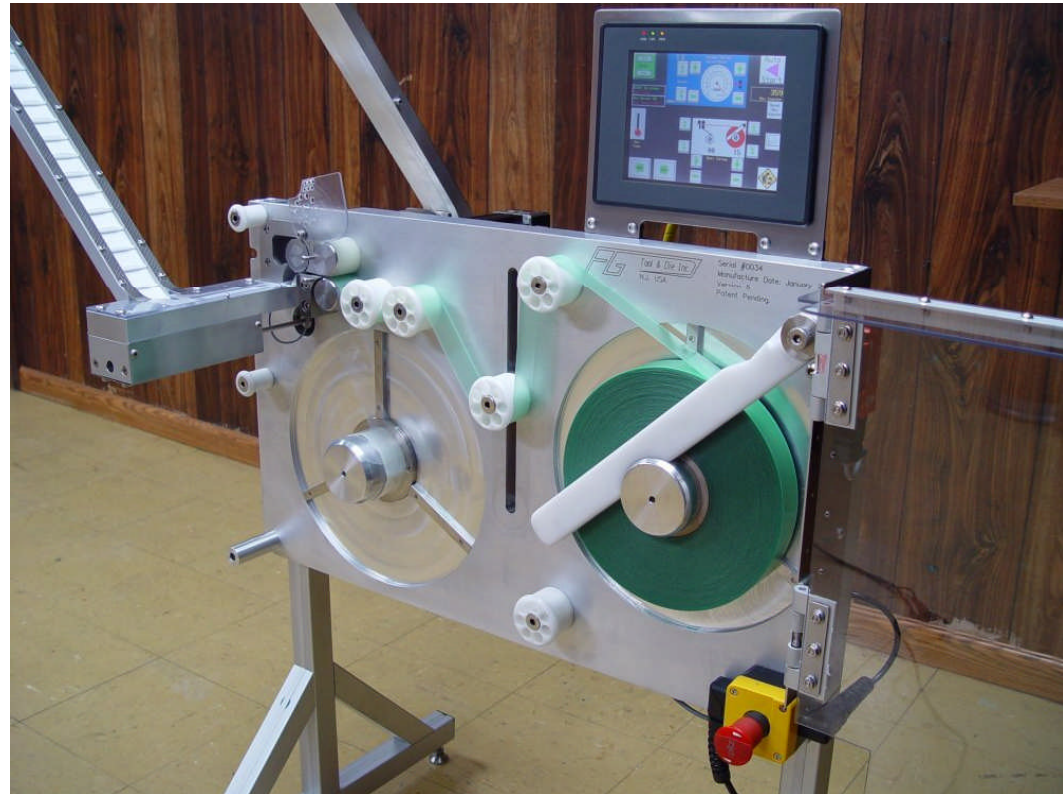
- Pan & Tilt
  - 2-axis
  - PC controlled
    - Camera
    - Laser
    - Radar





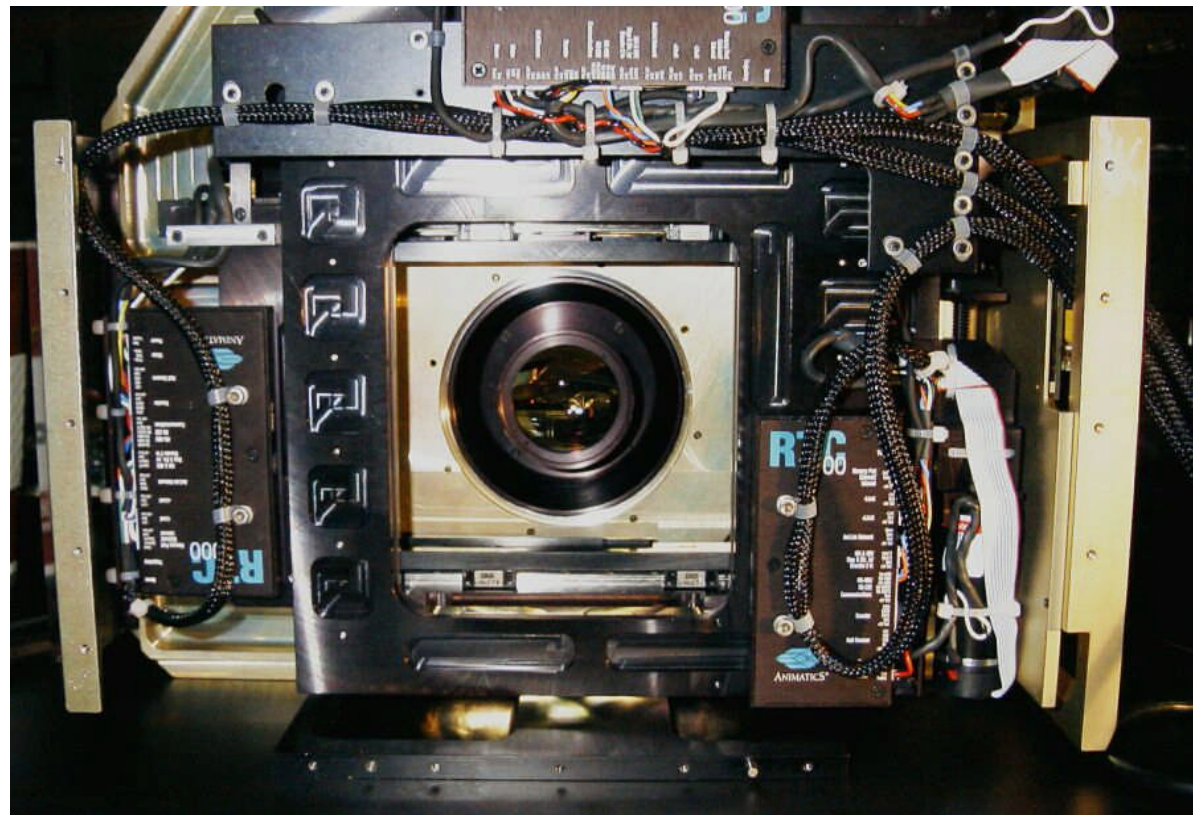
# Applications

- Breath Strips
  - 3 axis
  - HMI interface
  - No PLC/PC



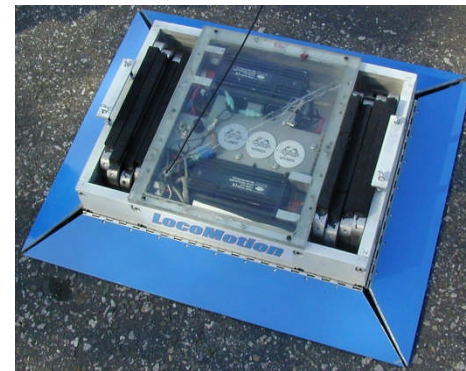
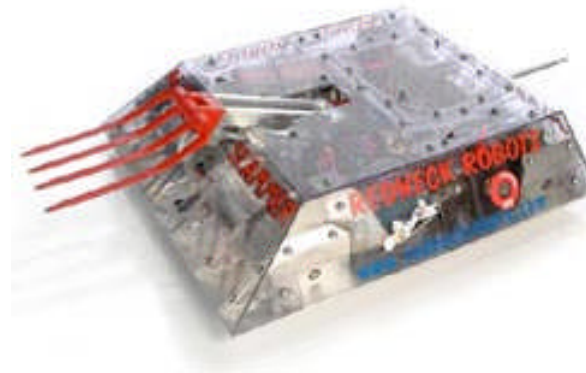
# Applications

- 3 Axis
- Camera Lens
- RTC4000



# Applications

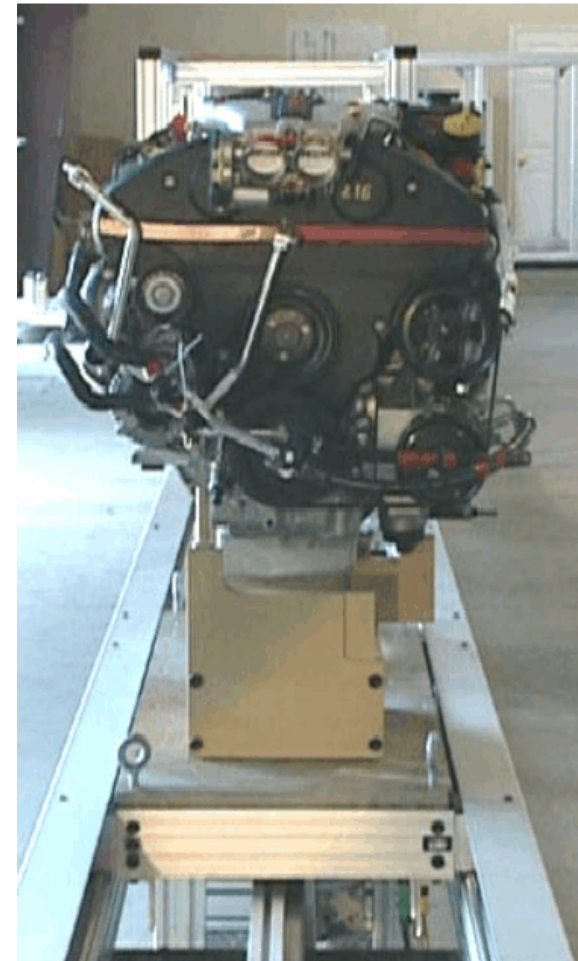
- Mobil Systems
  - Auxiliary vehicle
  - Remote Bomb Detonation
  - Hazardous area Robotics
  - Battle Bots
  - Animatronics





# Applications

- Automotive
  - Material Handling (Pallet)
    - 1 axis
    - PLC control
    - Replace traditional



# Applications

- Material handling
- Pharmaceutical
  - PC based control
  - 5 axis
  - Automated drug dispenser



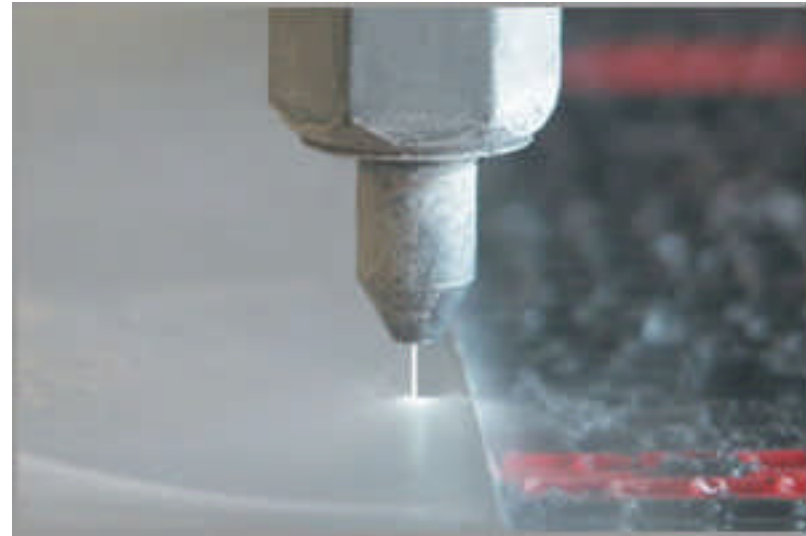
# Applications

- Material handling
- Welding
  - Position control of lift and rotation
  - 8 axis
  - Box section welding



# Applications

- CNC Retrofits
- Water Jet Cutting
  - 2 axis retrofit with Jen CNC
  - Replaced obsolete CNC Controller and stepper motors
  - Quick and very cost effective





# Application

- Bottle Capper
  - 2 axis
  - HMI Interface
  - Eliminated PLC & Torque Sensor
  - Made Simple & Compact Machine

